

教養孩童，使他走當行的道，
就是到老他也不偏離。
Train up a child in the way he should go:
and when he is old,
he will not depart from it.

箴言廿二：6 Proverbs 22:6

15/F, The Hong Kong Federation of Youth Groups
Building, 21 Pak Fuk Road, North Point, H.K.
admin@skhsch.org.hk
2520 1056
2520 1725

我們的服務 Our Service 非住宿服務 Non-residential Service



幼兒園 Nursery

為 2 至 6 歲兒童提供全日教育，啟發兒童分析及解決問題的能力，著重兒童均衡發展，培養兒童獨立自理能力，並發掘兒童的多元智能，讓他們在歡樂及無壓力中學習及成長，發展創意思維。兩所幼兒園分別容納 100 名兒童。

To provide whole-day education for children aged 2 to 6, focusing on balanced development, inspiring children's problem solving and analytical skills, and discovering children's multiple intelligences, allowing them to develop creative thinking, to learn and grow in a joyful and stress-free environment. Each of the two nurseries accommodates 100 children.

聖公會聖基道幼兒園（灣仔） S.K.H. St. Christopher's Nursery (Wan Chai)

香港灣仔灣仔道三號三樓
3/F., 3 Wan Chai Road, Wan Chai, H.K.
wc_admin@skhsch.org.hk
2832 7101

聖公會聖基道幼兒園（葵涌） S.K.H. St. Christopher's Nursery (Kwai Chung)

新界葵涌邨葵涌商場三樓平台一號單位
Unit No.1, Podium Level 3, Kwai Chung Shopping Centre,
Kwai Chung Estate, N.T.
kc_admin@skhsch.org.hk
2257 9331

日間幼兒照顧服務 Day Child Care Services

愛幼坊 Kiddie Square

為 0 至 3 歲幼兒提供多元化的優質日間及延展照顧及培育，啟發幼兒的潛能和全人發展，支援因工作或其他原因而暫時未能照顧子女的家長。服務名額共 88 個。

To provide a variety of day care and nurturing services for infant aged 0-3, to inspire their potential and holistic development. A total of 88 places are available.

九龍觀塘順利邨利康樓 F2 樓 233-248 號舖
Unit 233-248, F2/F, Lee Hong House, Shun Lee Estate,
Kowloon, H.K.
ccc@skhsch.org.hk 3110 5040

健苗軒鄰里支援幼兒照顧計劃 Kidsmind Neighbourhood Support Child Care Project

為初生嬰兒至小學生，包括特殊學習需要兒童，提供具彈性的日間幼兒照顧服務，提升社區互助與關懷。服務內容包括家居照顧服務和中心託管小組。

To offer flexible day care for children from newborns to primary school students, including those with special educational need, and promote mutual help and care within the community. Services include home-based child care and centre-based care group.

香港灣仔軒尼詩道 72 號新禧大樓二樓
2/F, Sun Hey Mansion, 72 Hennessy Road, Wan Chai, H.K.
kidsmind_nscpc@skhsch.org.hk
3628 5115



臨床心理輔導服務 Clinical Psychological Service

為本院及社區兒童提供心理評估、診斷及輔導，為員工提供與精神健康相關之個案諮詢及培訓。

To render psychological assessment, making diagnosis, and intervention to children of our Homes and the community. The service provides consultations and staff training.

香港北角百福道 21 號香港青年協會大廈 15 樓
15/F, The Hong Kong Federation of Youth Groups Building,
21 Pak Fuk Road, North Point, H.K.
cp@skhsch.org.hk
2520 1056



家庭支援服務 Family Support Service

同心牽 Heart Link

為來自基層及新來港兒童及其家庭提供全面照顧及「一站式」的支援服務，協助融入社區，培養兒童個人成長，促進親子互動及強化家庭功能，開展豐盛人生。

To provide comprehensive care and support services for grassroots and newly arrived children and their families. To promote community integration, foster children's personal growth, facilitate parent-child relationship and strengthen family functions.

新界沙田瀝源邨泉樓地下 125 號
Unit 125, Luk Chuen House, Lek Yuen Estate, Shatin, N.T.
heartlink@skhsch.org.hk
2646 6190

本計劃由香港公益金資助
This project is supported by The Community Chest

特殊學習需要兒童專業服務 Services for Children with Special Needs

健苗軒 Kidsmind

為 0 至 12 歲兒童提供由評估、轉介、訓練及輔導的一站式跨專業服務，及早識別及回應兒童之發展需要。同時提供入校支援服務，提供適切的介入。

To provide one-stop inter-professional services, including assessment, referral, training, and counseling for children with developmental needs aged 0 to 12 years, so as to achieve early identification and intervention. The Service also provides outreach and on-site support services to schools.

香港灣仔軒尼詩道 72 號新禧大樓二樓
2/F, Sun Hey Mansion, 72 Hennessy Road, Wan Chai, H.K.
kidsmind@skhsch.org.hk
3628 5008



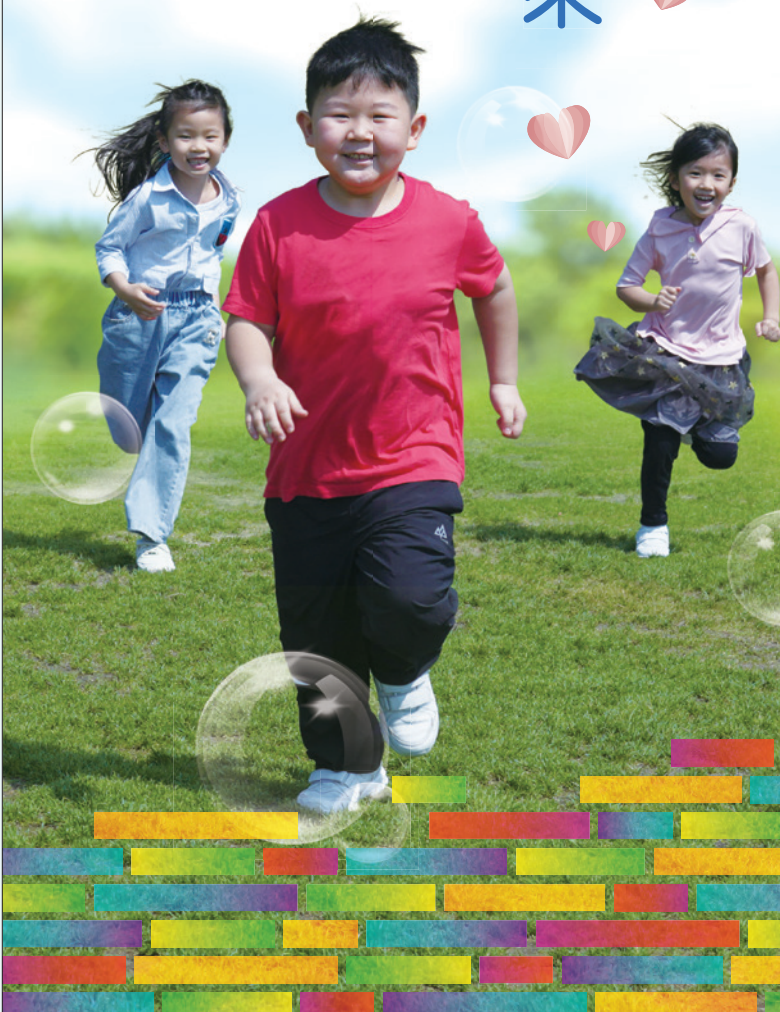
專項計劃 Special Projects

賽馬會幼兒喜步計劃 Jockey Club "Bright Start" Project

為幼兒中心設計配合初生至三歲嬰幼兒需要的服務模式，為幼兒教育員和家長提供全面支援，包括員工培訓、跨專業團隊全方位幼兒照顧、家長教育及參與、拓展社區網絡等。

To develop a high-quality child care centre (CCC model) through providing holistic support to both child care workers and parents. The scopes of the Project include staff training, holistic child care provided by a multidisciplinary team, parental education and involvement, and expansion of community networks.

香港北角百福道 21 號 香港青年協會大廈 15 樓
15/F., The Hong Kong Federation of Youth Groups Building,
21 Pak Fuk Road, North Point, H.K.
jobs@skhsch.org.hk 2520 1056



關於聖公會聖基道兒童院 About S.K.H. St. Christopher's Home

聖基道兒童院於 1935 年創辦，是全港擁有最多兒童之家服務名額的非政府機構，並由最初集中提供兒童院舍服務，擴展成一所多元化的兒童及青少年社會服務機構，致力幫助兒童及青少年面對逆境，讓他們在關愛的環境下成長，發展潛能，活出豐盛人生！目前本院營運超過 40 個服務單位及計劃。

Founded in 1935, the Home began as an orphanage taking care of homeless children. Today, it is the largest non-governmental organization in Hong Kong that provides small group home service. In meeting society's evolving needs, the Home provides various child-focused social service in Hong Kong, with the mission to create and sustain a caring environment for children and youth to grow, develop potentials and live a life of fullness. The Home currently operates more than 40 service units and projects.

願景 Vision

成為一間傳承基督的愛，追求卓越的社會服務機構。
To be a social service organization that inherits and spreads the love of Christ and pursues excellence.

使命 Mission

效法基督愛人的精神，以兒童及青少年為本，幫助他們在關愛的環境下成長，發展潛能，並且活出豐盛人生。
Following the love of Christ, to create and sustain a caring environment for children and youth to grow, to develop potentials and to live a life of fullness.

我們的服務 Our Service 住宿服務 Residential Service



兒童之家 / 緊急 / 短期兒童之家 Small Group Homes/ Emergency Short-term Care in Small Group Home

為 4 至 18 歲，因不同因素未能獲得原生家庭適當照顧，需要暫時離開家庭的兒童及青少年提供近似家庭模式的 24 小時住宿照顧服務，直至他們可以與家人團聚、被安排到長期的居住地方或獨立生活。同時設有緊急 / 短期兒童之家服務，為有突發或緊急需要的 4 至 18 歲兒童，提供緊急及短暫住宿照顧。服務名額共 194 個。

To provide a 24-hour family-like residential care, serving children and young people from 4 to 18 years old who cannot receive adequate care from their original families until reunion with their natural families, other long-term welfare arrangement or independent living. Emergency/ Short-term Care in Small Group Home (ECGH) is also provided for children whose parents cannot care for them because of emergency or crises situations. A total of 194 places are available.



☎ sgh_admin@skhsch.org.hk
☎ 2520 1056

真理家 Truth
公義家 Righteousness
平安家 Peace
救恩家 Salvation
靈光家 Holy Spirit
信實家 Faith

香港柴灣樂民道
Lok Man Road,
Chai Wan, H.K.

雅各家 James
安德烈家 Andrew
彼得家 Peter

九龍觀塘秀茂坪邨
Sau Mau Ping Estate,
Kwun Tong, Kln

約翰家 John
腓力家 Philip
湯馬家 Thomas

新界葵涌安蔭邨
On Yam Estate, Tsing Yi, N.T.

馬太家 Matthew
西門家 Simon
達太家 Thaddaeus

新界青衣長亨邨
Cheung Hang Estate,
Tsing Yi, N.T.

仁愛家 Love
喜樂家 Joy
和平家 Tranquility

新界元朗天水圍天瑞邨
Tin Shui Estate, Tin Shui Wai,
Yuen Long, N.T.

忠實家 Loyalty
溫柔家 Humility
節制家 Temperance

新界元朗天水圍天耀邨
Tin Yiu Estate, Tin Shui Wai,
Yuen Long, N.T.

忍耐家 Patience
恩慈家 Kindness
良善家 Goodness

新界元朗天水圍天耀邨
Tin Yiu Estate, Tin Shui Wai,
Yuen Long, N.T.

寄養服務 / 緊急寄養服務 Foster Care Service / Foster Care Service (Emergency Care)

為 18 歲以下、因特殊家庭情況而缺乏父母照顧的兒童，提供家庭式住宿照顧服務，讓他們繼續享受家庭生活，直至他們能與家人團聚、入住領養家庭或獨立生活。緊急服務為因家庭遇到突發事故的兒童提供即時及短期住宿服務。總服務名額共 70 個。

To provide residential family care for children under 18 years old whose parents cannot adequately take care of them due to special family circumstance, so that they can continue to enjoy family life until they reunite with their families, are adopted or live independently. Emergency Service provides immediate and short-term family care for children whose parents cannot care for them because of emergency or crises situations. A total of 70 places are available.

香港北角百福道 21 號 香港青年協會大廈 15 樓
15/F., The Hong Kong Federation of Youth Groups Building,
21 Pak Fuk Road, North Point, H.K.
☎ foster@skhsch.org.hk
☎ 2520 1056



青年共居計劃 Youth Co-living Program

為曾接受兒童住宿照顧服務及缺乏家庭支援的年青人提供可負擔及安全的過渡性居所，協助他們建立自立能力。

To provide an affordable and safe transitional accommodation to youths who are residential child care service leavers and to facilitate their personal development.

「舊舍」青年共居計劃 “T-Lodge” Youth Co-living Program

香港北角百福道 21 號 香港青年協會大廈 15 樓
15/F., The Hong Kong Federation of Youth Groups Building,
21 Pak Fuk Road, North Point, H.K.
☎ t-lodge@skhsch.org.hk
☎ 2520 1056

專項計劃 Special Projects

賽馬會「凝伙」計劃 Jockey Club Project Bonfire

為居住在兒童之家的兒童及青少年建立良好的成長環境，連結社會資源，實踐個人化的發展計劃，建立自信及社會資本，完善離院青年的發展軌跡。

To create a nurturing environment, establish individualized development plans, and provide continuous support to connect the service users with community resources and to help them build self-confidence and social capital for their overall growth.

香港北角百福道 21 號 香港青年協會大廈 15 樓
15/F., The Hong Kong Federation of Youth Groups Building,
21 Pak Fuk Road, North Point, H.K.
☎ sgh_admin@skhsch.org.hk
☎ 2520 1056

T-Port 青年後續支援計劃 T-Port Aftercare Project

為本院兒童之家及寄養服務的離院青年提供後續支援服務，協助他們面對各項挑戰、建立自立能力及過渡至獨立成人的歷程。

To provide aftercare services for young people leaving Small Group Homes and Foster Care Services, assisting them in facing life challenges, building self-sufficiency, and transitioning to independent adulthood.

香港北角百福道 21 號 香港青年協會大廈 15 樓
15/F., The Hong Kong Federation of Youth Groups Building,
21 Pak Fuk Road, North Point, H.K.
☎ t-port@skhsch.org.hk
☎ 2520 1056



捐款表格 Donation Form

- ☐ 我樂意參加「樂樂」「遙遙」助養計劃
(以助養全院所有兒童模式進行，助養費每月最少港幣 90 元，最少助養一年，助養人有機會親自關懷本院兒童。)
按月捐款：☐ \$300 ☐ \$200 ☐ \$100 ☐ 其他 \$ _____
(只限以信用卡捐款)
按年捐款：☐ \$3,600 ☐ \$2,400 ☐ \$1,500 ☐ 其他 \$ _____
☐ 我樂意一次過捐款予「樂樂」「遙遙」助養計劃基金
☐ \$10,000 ☐ \$5,000 ☐ \$3,000 ☐ 其他 \$ _____

捐款人資料 (姓名須與香港身份證 / 護照上資料相同)
姓名 (中文)：_____ 先生 / 女士 (英文)：Mr./Ms. _____
地址：(請以英文填寫) _____

手提電話 *：_____ 其他聯絡電話：_____
* 本院將於 10 個工作天內透過電話短訊確認收妥此表格。
電郵：_____

我想以以下方式收取收據
☐ 電子收據 ☐ 郵寄收據 ☐ 不需要收據

請選擇捐款方法：
☐ 信用卡 (表格可直接傳真至：2520 1725) ☐ Visa ☐ Mastercard
持卡人姓名：_____
信用卡號碼：_____
有效日期至：_____ 月 / _____ 年 (最少兩個月內有效)
持卡人簽署：_____
(若使用信用卡每月定額捐款，本院將按月從戶口收取捐款，直至捐款人另行通知。收據將於每年 5 月初寄出，以便處理稅務事宜。)

- ☐ 劃線支票 抬頭請寫「聖公會聖基道兒童院有限公司」。
☐ 直接存款 / 轉數快 請把捐款轉賬至聖公會聖基道兒童院有限公司，存入匯豐銀行戶口 037-002821-001 或使用「轉數快」，流動電話號碼：9601 6661。完成後，請提供交易紀錄截圖，並連同捐款人姓名、聯絡電話、地址及捐助項目，以 WhatsApp (9601 6661) 或電郵 develop@skhsch.org.hk 給本院。

注意事項：
1. 請在適當空格內勾。
2. 請填妥表格寄回香港北角百福道 21 號香港青年協會大廈 15 樓聖公會聖基道兒童院收或傳真至 2520 1725。
3. 為減省行政費，捐款 100 元以上之捐款人，可獲發收據，憑收據可申請扣減稅款。
4. 如已是本院捐助者，以上資料會以這次登記作最後更新。
5. 您的個人資料絕對保密，只用作邀請參與助養人活動、通訊、籌募、義工招募及收集意見之用。請以“勾”表示：本人同意 / 口不同意聖公會聖基道兒童院向本人提供上述資料。(如閣下未有表明是否同意，本院將假定閣下接受本院向閣下發出上述資訊，直至另行通知。若有任何疑問，請致電 3756 4488 與本院職員聯絡。
稅局檔案編號 IR Ref. No.: 91/4261
L-GD-02/25